

# Welcome to the Lebanon County ArcGIS Online Property Viewer User Guide



**GIS** stands for **G**eographic **I**nformation **S**ystems. It is a computer system utilized for capturing, storing, and displaying data in relation to geographic locations.

This application provides the user updated information of data related to business, community, or personal interest. Whether it be day to day usage or long term planning, GIS supplies a wealth of data for better decision making.

In this User Outline, we have provided basic information on what our application is, what it does, and how it will impact you, the user.

This Outline is broken down by what you will see on the screen so feel free to jump around as you wish. Or, read completely to understand the full extent of our county's data.

## DISCLAIMER:

Lebanon City Authority/County GIS Department. GIS Data Layers - All data, information, and maps are provided "as is" without warranty or any representation of accuracy, timeliness of completeness.

The burden for determining accuracy, completeness, timeliness, merchantability and fitness for or the appropriateness for use rests solely on the user.

The County of Lebanon makes no warranties, express or implied, as to the use of the information obtained here.

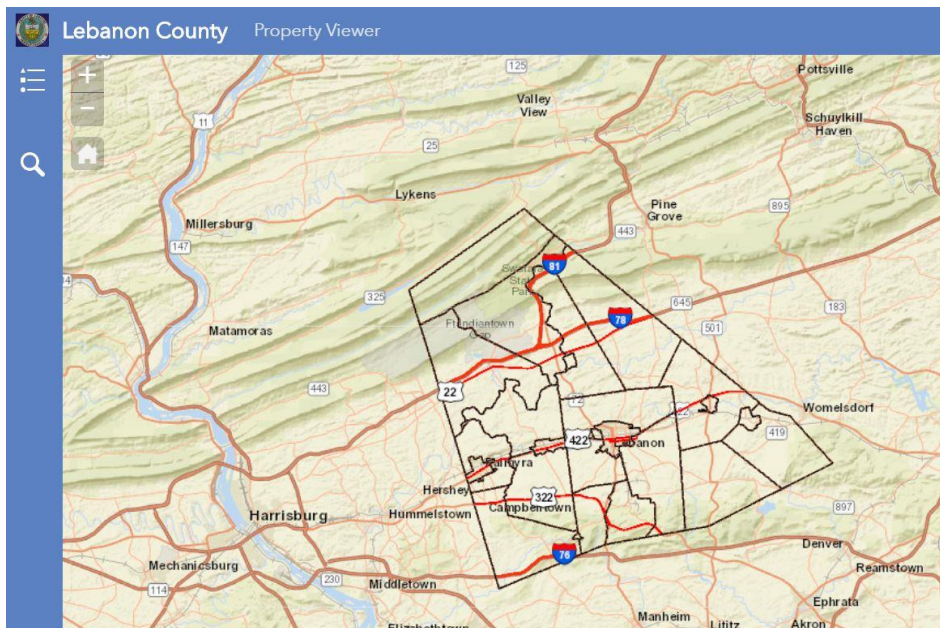
There are no implied warranties of merchantability or fitness for a particular purpose.

The user acknowledges and accepts all limitations, including the fact that the data, information, and maps are dynamic and in a constant state of maintenance, correction and update.

# Extent

## View of the map on your screen

After you agree to the Terms and Conditions, you will enter into our Application. The opening screen, as shown below, is your full extent or view.



Your full extent allows for a regional look at Lebanon County in relation to what is around us.

Here, you can see the Municipal Boundaries in black.

From this screen you can zoom in or out using your scroll wheel on your mouse or the Plus and Minus Widget on the top, left hand side of your screen.



If you wish to return to the full extent, simply click your Home Widget located directly under the Plus and Minus Widget.



# Legend

*The key that tells you what is on the map*

Your Legend Widget is located in the top, left of your screen on the green banner.



As you continue to zoom in, you will notice more and more features appear on your map as well as your legend.

Likewise, as you continue to zoom out, your features will disappear.

You will have a total of 3 features in your legend.



To close your legend, simply click the double arrows at the bottom of your legend. The legend will not close on its own.



## Search

*Easily browse through data to find what you need*

The magnifying glass under your Legend Widget is your Search Widget. Your Search Widget allows you to search by address or place name.

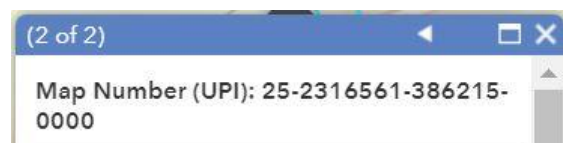


**NOTE:** This application will not allow a user to search by owner name as to protect privacy.

As you open your search bar, type in any point of interest and hit enter. The application will take you straight to the location. If it does not, recheck your spelling or supply additional information like a zip code or a map number.

From here you are able to click on your parcel or manufactured home to receive a popup with the associated data.

Some locations are close together. In this case, the application will give you two sets of data to choose from. Use the arrow on the top of the pop up to toggle through the data and find the information you are looking for.



## Measure Tool

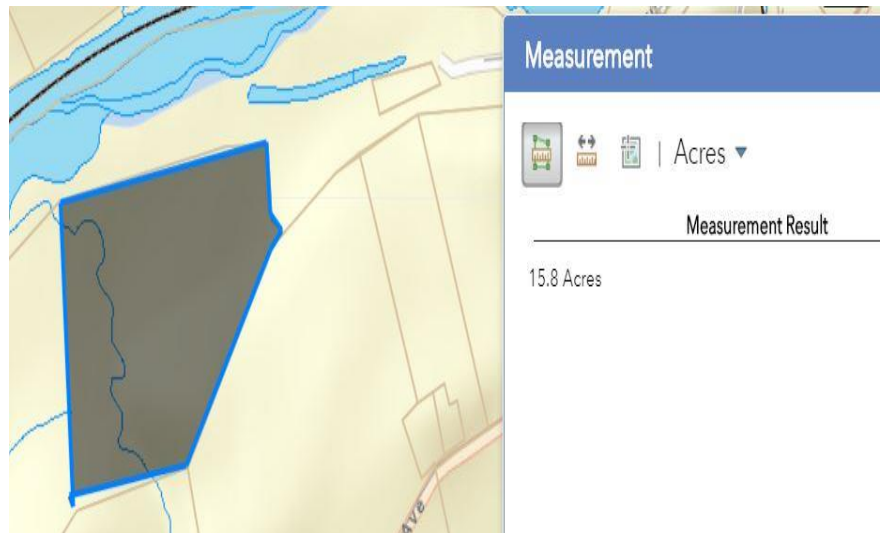
*Easily measure an area or distance on your map*

The ruler at the top right of your screen is the Measuring Widget. This widget allows the user to measure the area of a polygon, measure a distance, or measure a specific location in terms of latitude and longitude.



For each option you can choose between different units of measurement to fit your specific need.

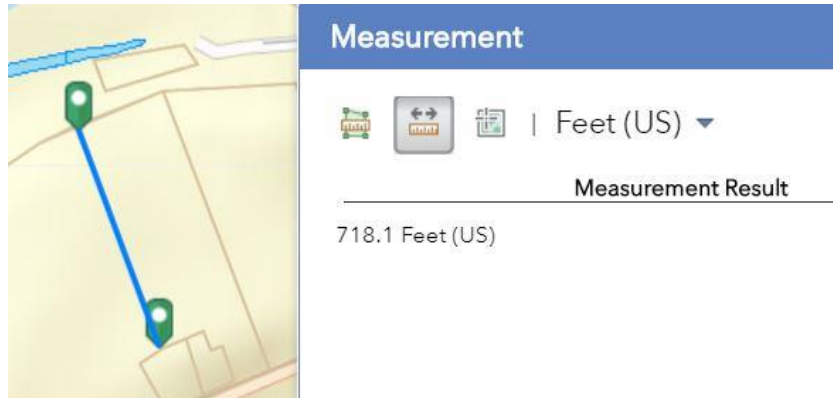
To measure an area, click the ruler and choose the first option to the left. Once selected click and draw the polygon on the area you would like to measure.



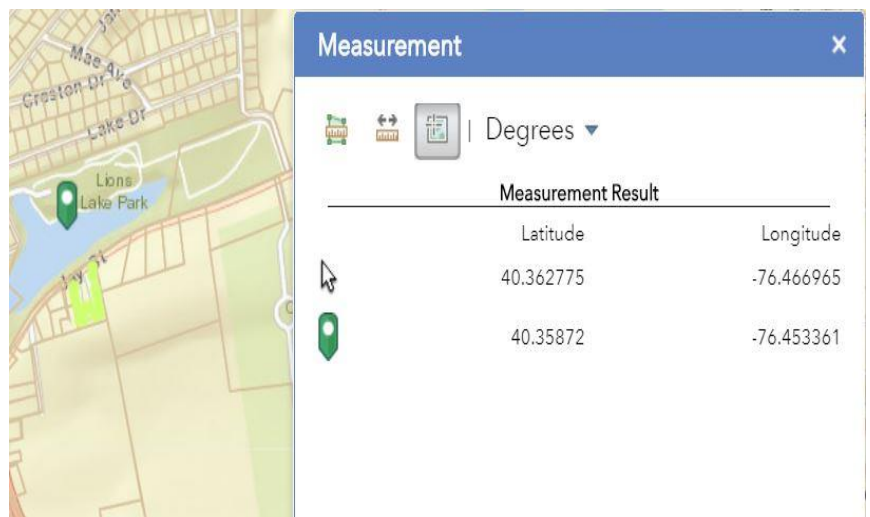
To stop, double click at your end point. To delete your polygon, either click on the map away from your polygon or deselect the tool.

*Measure Tool Continued On Next Page*

To measure a distance, select the middle option and click to drop your points onto the map. Once done, double click your last point. To delete your line, either click on the map away from your line or deselect the tool.



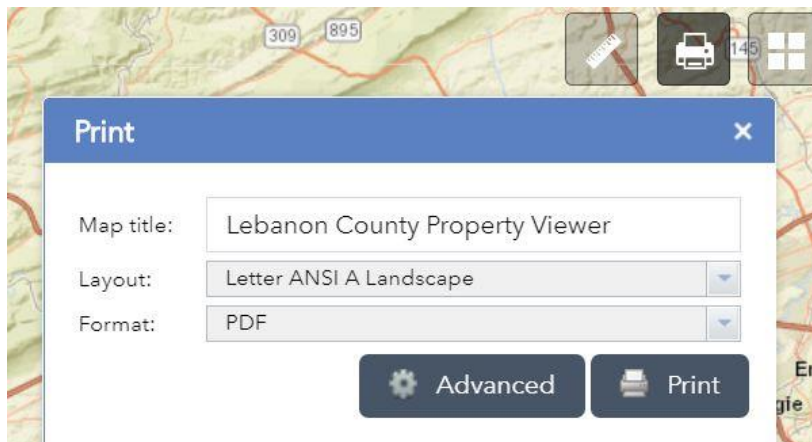
To measure a location in latitude and longitude, choose the tool to farthest to the right. Then double click a spot on the map and a green marker will appear. You can then compare this location to the location of your cursor as you move it across the screen.



## Print

*Easily print your map as a .PDF*

The Print Widget is provided for your convenience. Once selected, the print screen will appear. Here you can alter the layout of your map and also change the map title.



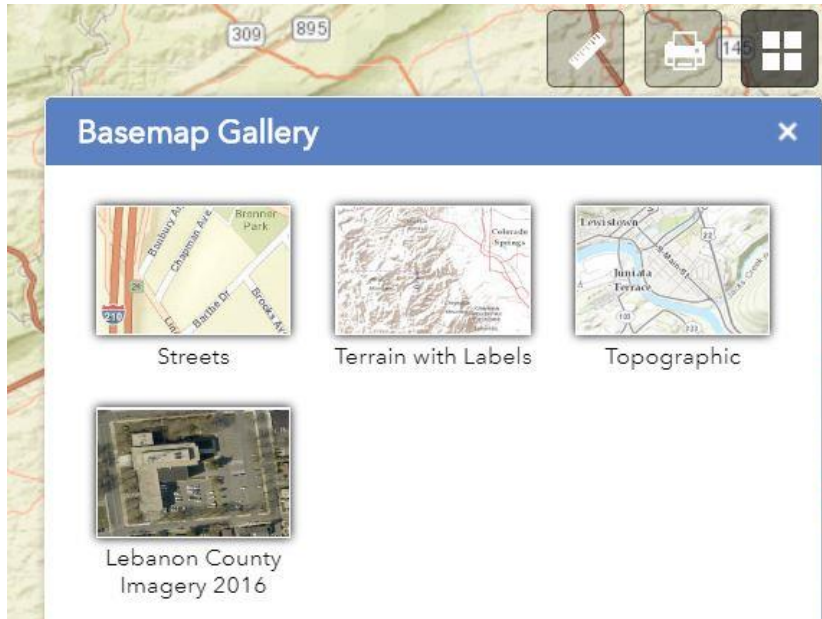
The default setting is set for a standard 8.5"x11" sheet of paper in landscape. A landscape view will be the most similar appearance on your screen.

The Advanced button allows for more control over how your map will be printed and what will be included.



## Basemap Gallery

*Choose from different background imagery to meet your needs*



The last widget available is the Basemap Gallery Widget.

Switch between Streets, Terrain with Labels, Topographic, or our own flown imagery of Lebanon County. The default basemap is Streets.

Streets Basemap shows Township names, major highways, minor roads, major waterbodies, and cemeteries/parks.

Terrain with Labels Basemap shows a representative 3D view of Lebanon County. This allows a basic understanding of the physical landscape surrounding a location.

Topographic Basemap is similar to a traditional topographic map. This basemap provides contour lines, shaded relief, major streets, minor streets, major waterbodies, and cemeteries/parks.

Lebanon Country Imagery 2016 Basemap provides an aerial view of Lebanon County. This imagery shows natural landscape and human infrastructure.